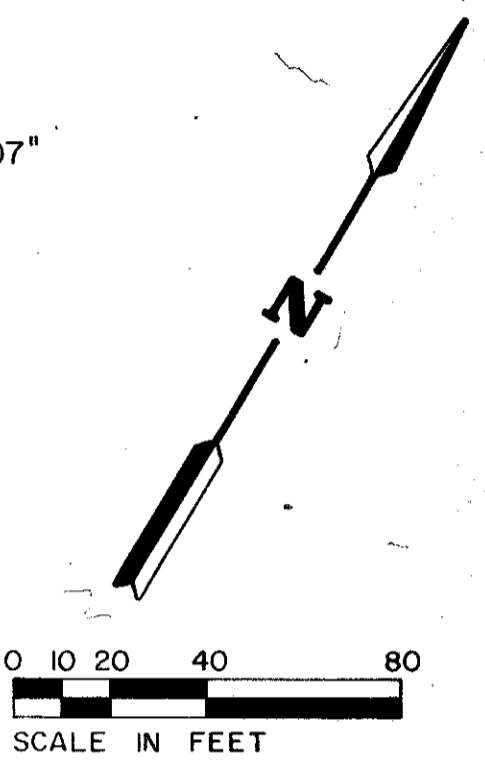
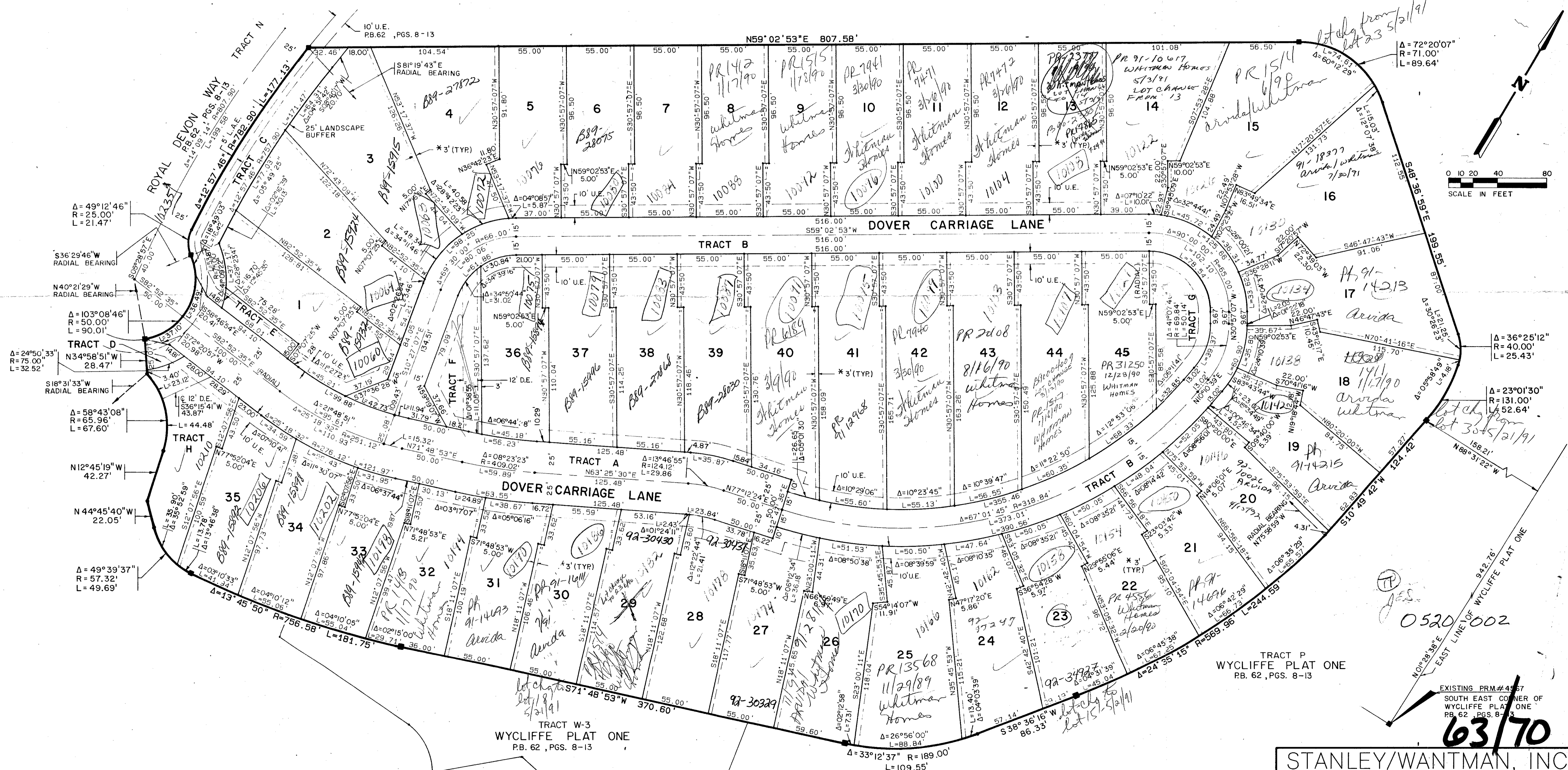


WYCLIFFE - PARCEL D  
 SITUATE IN SECTION 25, TOWNSHIP 44 SOUTH, RANGE 41 EAST  
 PALM BEACH COUNTY, FLORIDA  
 BEING PART OF WYCLIFFE GOLF AND COUNTRY CLUB, P.U.D.  
 A REPLAT OF TRACT D OF "WYCLIFFE PLAT ONE" AS RECORDED IN P.B. 62, PGS. 8-13  
 1989 SHEET 2 OF 2

STATE OF FLORIDA  
 COUNTY OF PALM BEACH  
 THIS PLAT WAS FILED FOR  
 RECORD \_\_\_\_\_  
 THIS \_\_\_\_\_ DAY OF \_\_\_\_\_  
 AD, 1989 AND DULY RECORDED  
 IN PLAT BOOK \_\_\_\_\_ ON PAGES  
 AND \_\_\_\_\_  
 JOHN B. DUNKLE, CLERK  
 BY: \_\_\_\_\_, D.C.  
 CIRCUIT COURT SEAL

TRACT P  
 WYCLIFFE PLAT ONE  
 PB. 62, PGS. 8-13



SUBDIVISION \* Wycliffe Parway  
 BOOK 03 PAGE 70  
 FLOOD MAP # 100B  
 ZONING 86-104 FTS  
 QUAD # 03  
 ZIP CODE 33407  
 TRS. NAME 162 737 33407

TRACT W-3  
 WYCLIFFE PLAT ONE  
 PB. 62, PGS. 8-13

TRACT P  
 WYCLIFFE PLAT ONE  
 PB. 62, PGS. 8-13

STANLEY/WANTMAN, INC.  
 2000 LOMBARD STREET, WEST PALM BEACH, FL 33407 (407) 642-7444

DRAWN	D.L.S.	DATE	1988
CHECKED	R.B.P.	SCALE	1" = 40'
DRAWING NO.	09948PL		

\* 3' TYPICAL MAINTENANCE ACCESS EASEMENT - REFER TO HOMEOWNERS ASSOCIATION DOCUMENTS.

WYCLIFFE - PARCEL D

63/70

0520 002